

FWD/HWD PRIMAX

Trailer-mounted FWD : The classic solution



SWECO COMPLIES WITH INTERNATIONAL STANDARDS:

1. ICAO Annex 14 Volume 1 -
Aerodrome - Design and Operation
2. FAA AC 150/5370-11B
3. AASHTO R32-11
4. Civil Aviation Safety Regulation:
CASR Part 139 – Aerodromes

PRIMAX 150 KN 250 KN 350 KN

FALLING WEIGHT DEFLECTOMETER (FWD)

The trailer-mounted PRIMAX FWD is the classic and flexible solution from Sweco Danmark A/S. Mounted on a double-axle trailer it is independent of the towing vehicle and can be towed by any vehicle.



Sweco Danmark A/S attaches great importance to supplying safe and stable equipment and the newest technology forms the basis of the FWD equipment. The PRIMAX software incorporates alarms that are displayed on the computer screen. If the operator ignores vital warnings, certain functions cannot be performed with the FWD e.g. in connection with pavement temperature measuring: After having inserted the asphalt temperature sensor in a hole in the pavement, the sensor registers when the temperature is stable. The temperature is measured while the loading plate is placed on the pavement and cannot be raised before the temperature

sensor is placed in its holder. The equipment cannot be driven to another position with the loading plate down and strategically placed emergency switches allows the operator to stop the equipment at any time while operating manually.

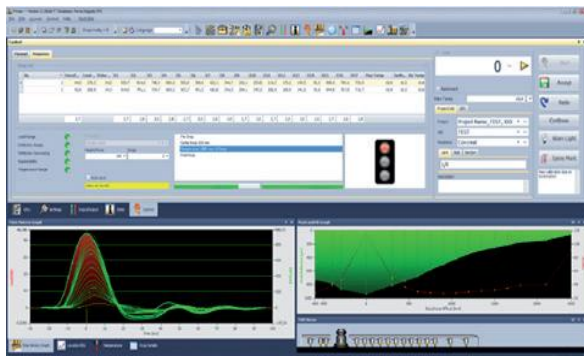
The PRIMAX FWD trailer is the classic and flexible solution from Sweco. Mounted on a double-axle trailer, it is independent of the towing vehicle and can be towed by any vehicle. The only cable connecting the trailer with the towing vehicle is the PC computer cable. The operator controls all FWD functions from the PC, which is placed in the towing

vehicle. This makes the measuring work simple and easy and only one operator is needed for the work.



Like all FWD equipment from Sweco, the standard trailer-mounted FWD is supplied with personal computer, Windows FWD software, time history module, transport lock, DMI (Distance Meter Indicator) integrated in the software, three temperature sensors, four-split loading plate, 9-14 or up to 16 geophones and warning lights. Additional functions can easily be added such as video or marking equipment, DGPS (Geographic Positioning System), which enables presentation of data in maps or general plans of site.

For data treatment Sweco supplies PRIMAX DESIGN, a back-calculation software for both road and/or airport data analysis. However, files generated from the equipment can be applied in any other back-calculation program.



No tools are needed for replacement or removal of weights. Multi-step adjustable drop height secures very accurate load configurations



The geophones are easily accessible and simple to replace.



The four-split loading plate allows good contact to the surface and accurate measuring.



THE MODULAR CONCEPT



The modular principle means that there is no need for investment in new equipment if the demands on the equipment change. All that is necessary to upgrade the equipment from a standard 7-150 kN FWD to a 7-250 kN Heavy Weight Deflectometer (HWD) or even a 7-350 kN Super Heavy Weight Deflectometer is to add more weights, a larger load cell and upgrade software. The trailer-mounted FWD can also be integrated in a van without having to invest in new basic measuring equipment.

BURGAN EQUIPMENT CO. P.O.

Box: 4148, Safat **Kuwait**

Tel. : +965 2243 7670

Tel. : +965 2244 6832

Fax : +965 2240 2294

Warehouse Tel.: 24846731

contact@burganequip.com

BURGAN EQUIPMENT CO. DUBAI (BR.)

P . O Box 47817, **Dubai**,

Office : +971 04 2724759

FAX : +971 04 3232834

Mob.: +971 509033564, 508708303

burgandubai@burganequip.com

HISHAM HUSSAIN AL-ESSA & SONS EQUIPMENT CO

VP.O. Box: 22036, Doha, **Qatar**

Tel. : +974 44987832

Fax : +974 44310790

Mob: +974 66003993

Mob: +974 33468825

burganqatar@burganequip.com